



GAT MONTHLY MEMBERSHIP PROGRESS REPORT

Results as of: 5/31/2023

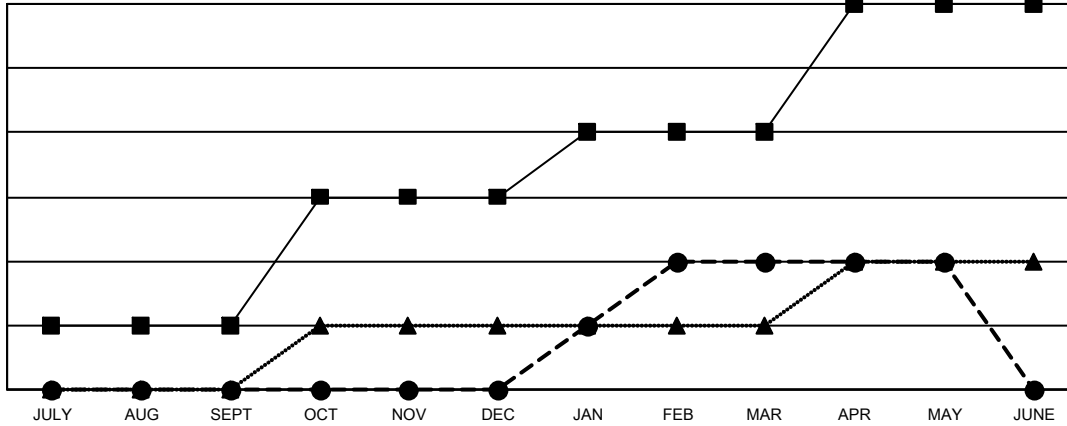
Multiple District 16

LOCATION: NEW JERSEY

Clubs			
RESULTS FOR 2022-2023			
QUARTER	NEW CLUB GOAL	NEW CLUBS	DROPPED CLUBS
JULY/AUG/SEPT	1	0	1
OCT/NOV/DEC	2	0	6
JAN/FEB/MAR	1	2	0
APR/MAY/JUNE	2	0	0

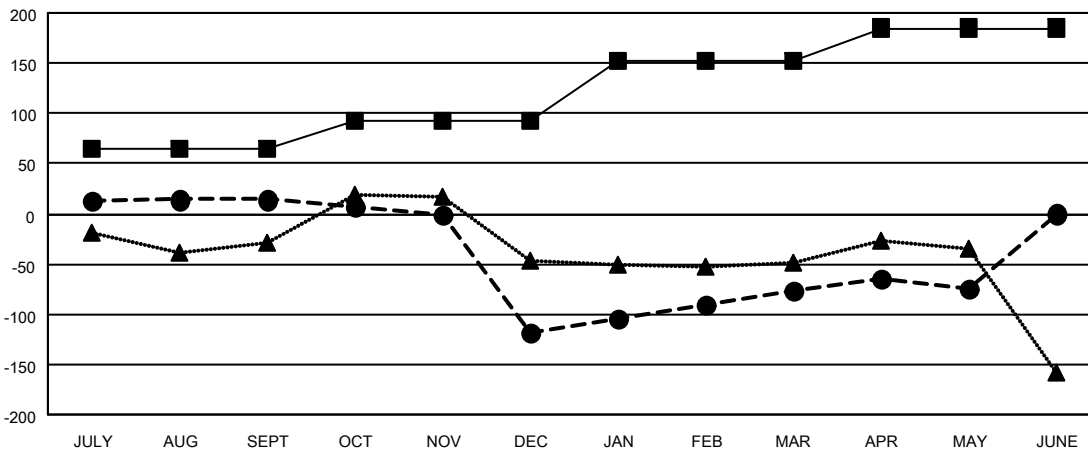
Members			
RESULTS FOR 2022-2023			
QUARTER	MEMBER GROWTH NET GOAL	MEMBER GROWTH ACTUAL	DROPPED MEMBERS ACTUAL (including transfers)
JULY/AUG/SEPT	65	114	92
OCT/NOV/DEC	28	93	219
JAN/FEB/MAR	60	173	123
APR/MAY/JUNE	32	79	72

GOALS AND ACTUAL NEW CLUBS CUMULATIVE



- - CURRENT YEAR GOALS FOR NEW CLUBS
- - CURRENT YEAR ACTUAL NEW CLUBS
- ▲ - LAST YEAR ACTUAL NEW CLUBS

GOALS AND ACTUAL MEMBERS CUMULATIVE



- - MEMBER GROWTH NET GOAL
- - MEMBER GROWTH ACTUAL
- ▲ - LAST YEAR MEMBERSHIP ACTUAL

DROPPED CLUBS: 7	
DROPPED MEMBERS	
DECEASED	58
CLUB CANCELLED	78
OTHER	371
TOTAL	507

83 CLUBS OF 171 ADDED 1 OR MORE NEW MEMBERS

[CLICK HERE FOR CUMULATIVE MEMBERSHIP DATA](#)

GENDER DISTRIBUTION	
MALE	2,532 (64.62%)
FEMALE	1,380 (35.22%)
NON BINARY	0 (0.00%)
PREFER NOT TO ANSWER	6 (0.15%)
TOTAL FAMILY UNIT MEMBERS	744
FAMILY MEMBERS PAYING HALF DUES	389